



CREATIVE SESSION 9

TIDAL STREAMS COLOUR-IN

SPOTTING TIDAL STREAMS

The idea of this Tide School creative session is for you to learn while relaxing, colouring in the template and imagining your brushstrokes being the flow of water.

Even on days when the sea looks completely still, do not be fooled! If you are somewhere with tides, 90% of the time there will be tidal streams flowing along the shore and these can have a huge impact on where you can go and how long it takes to get there. In most places tidal streams flow each way for 6 hours at a time, changing direction at set times before and after high tide, a period called 'Slack Water'. If you know the time of Slack Water you will have an idea which way the currents are flowing, but depending on the wind direction this can be earlier or later by up to an hour. So being able to quickly spot the streams when you are out on the water will help you know exactly when the 'tide has turned'.

When you travel somewhere new and don't know the time of Slack Water, being able to spot the streams is even more important. If it is windy then the surface water will move in the direction the wind is blowing, but a closer inspection may show that the streams (which flow all the way down to the seabed) are in fact moving the opposite way. The clues showing you this are often subtle and one on its own may be an anomaly, but if three of four are all indicating the same thing, you can be sure the streams are flowing that way. So the purpose of this Creative Session is to teach you these clues by colouring them in - whether it's a standing wave made by streams flowing over an uneven seabed, vortices on the downstream side of an island, water patterns around a buoy, the moon in the sky, a boat at anchor or a small piece of seaweed drifting along...

INSTRUCTIONS

Step 1

Print off Page 4 on good quality paper

Step 2

Cut out the dotted lines and you have your artwork template ready...

Step 3

Sit back and relax, colouring in the scene and imaging your brushstrokes being the flow of the tide. Which way is the water flowing?

Step 4

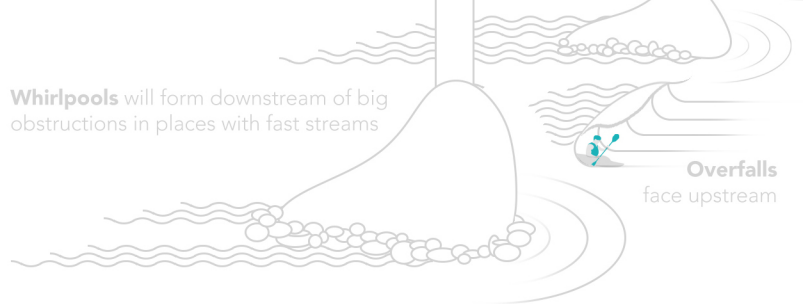
Put your artwork in a frame and hang it on the wall!

If you know the **moon phase** you can work out what the streams will be doing



Boats at anchor
face upstream

Whirlpools will form downstream of big obstructions in places with fast streams



Overfalls
face upstream

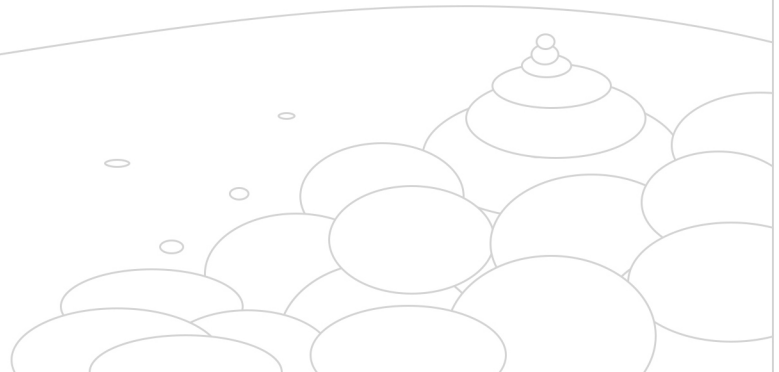
Look for **water patterns** around buoys



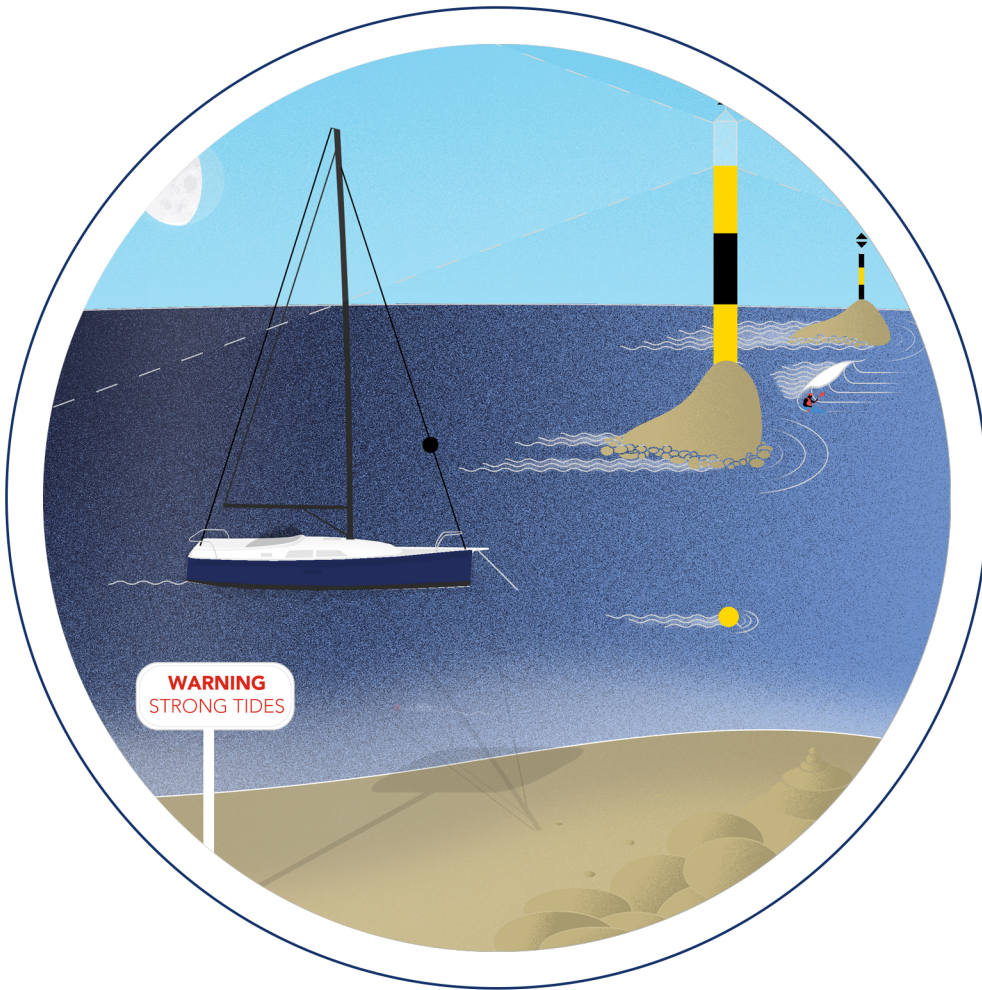
Measure the speed of objects drifting in the water



At low tide, streams will flow the opposite direction to the **tide wave**



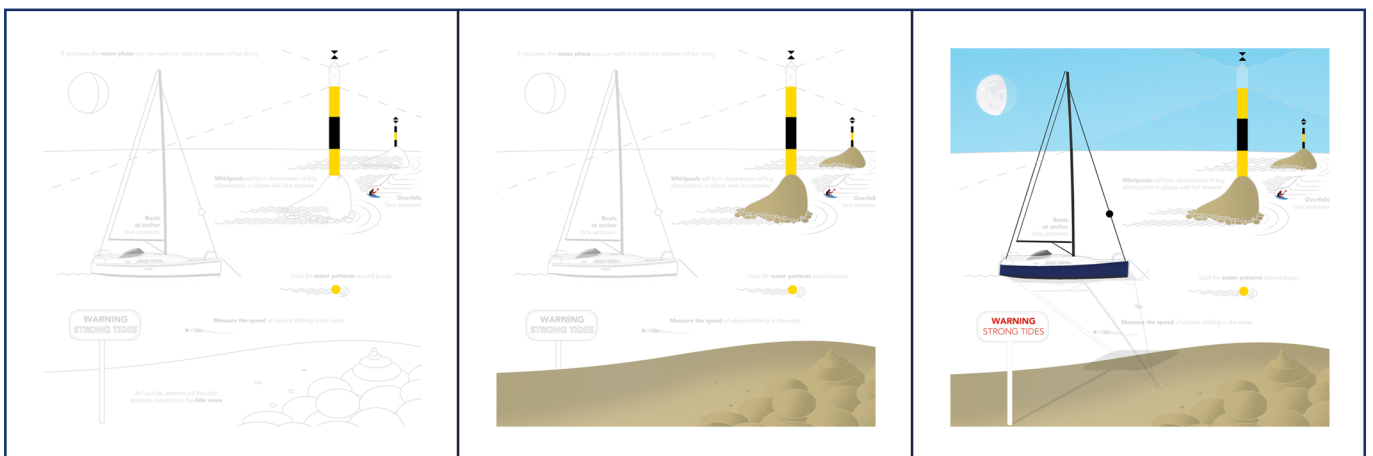
CLUES FOR SPOTTING TIDAL STREAMS



STEP 1

STEP 2

STEP 3



Share photos of your Creative Session!
 Tag us on social media @tide__school